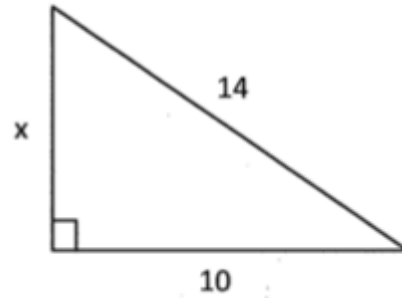
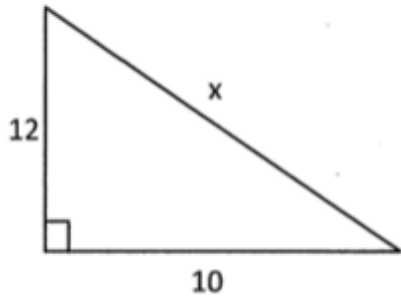
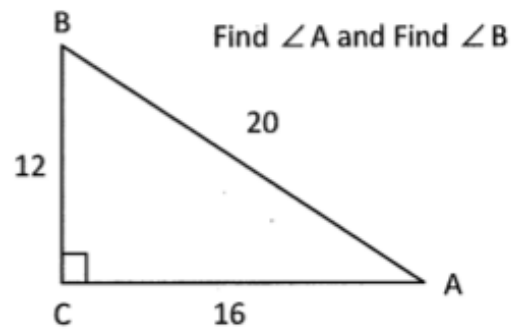
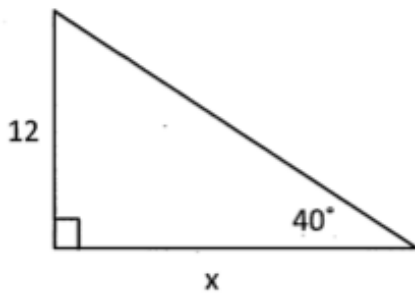
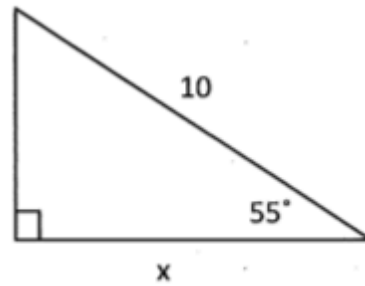
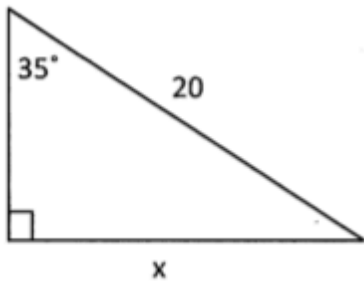


From Chapter 2

1) Solve for x . (Pythagorean Theorem)



2) Solve for x . (Using Sin, Cos, Tan Ratios)



Date _____

Name _____

LG 5

1. Find the General Term given: 5, 9, 13, ...
2. Given $t_1 = 17$ and $d = -9$, find t_{20}
3. Find the 5 arithmetic means: 3, _____, _____, _____, _____, _____, 27
4. Find the sum of each arithmetic series.
 - a) $2 + 4 + 6 + \dots + 30$
 - b) $5 + 1 - 3 - 7 \dots - 27$

From Chapter 3**1) Multiply.**

a) $(x + 4)(x + 6)$

b) $(2x - 3)(x + 5)$

c) $(x + 4)(x^2 + 2x - 3)$

Date _____

Name _____

2) Factor.

a) $3x - 6$

b) $-5x + 10$

c) $x^2 - 100$

d) $4x^2 - 49$

e) $x^2 + 8x + 12$

f) $y^2 - 3y - 18$

g) $6x^2 + 13x - 5$

h) $3x^2 - 27$

Date _____

Name _____

From Chapter 4

1) Simplify the following radicals.

$\sqrt{50}$

$\sqrt{200}$

$\sqrt{64}$

$\sqrt[3]{80}$

$\sqrt[3]{128}$

$\sqrt[4]{80}$

2) Rewrite as an entire radical.

$2\sqrt{5}$

$4\sqrt[3]{3}$

3) Evaluate (without using a calculator).

$4^{\frac{3}{2}}$

$8^{\frac{4}{3}}$

$(-16)^{\frac{3}{2}}$

$\left(\frac{1}{8}\right)^{\frac{1}{3}}$

$4^{\frac{3}{2}}$

16^{-75}

4) Express each radical as a power.

$(\sqrt[3]{4})^5$

$\sqrt{5.5}$

5) Simplify the following. Write all powers with positive exponents.

$\frac{x^2 y^3}{xy^5}$

$(x^{-2} y^3)(x^4 y^{-1})$

$\left(\frac{x^2}{x^4}\right)^{-3}$

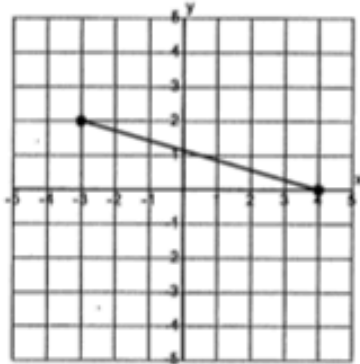
From Chapter 5

1) Write the Domain and Range for each of these relations.

a) $\{(0,3) (1,4) (2, 5)\}$

Domain: _____ Range: _____

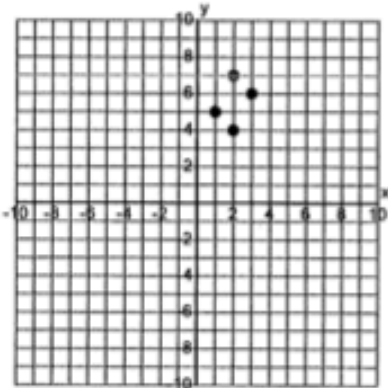
b)



Domain: _____

Range: _____

2) Is the relation a function (yes or no)?



3) Is the function a linear relation (yes or no)?

a) $\{(0, 30) (1, 20) (2, 10) (3, 0)\}$

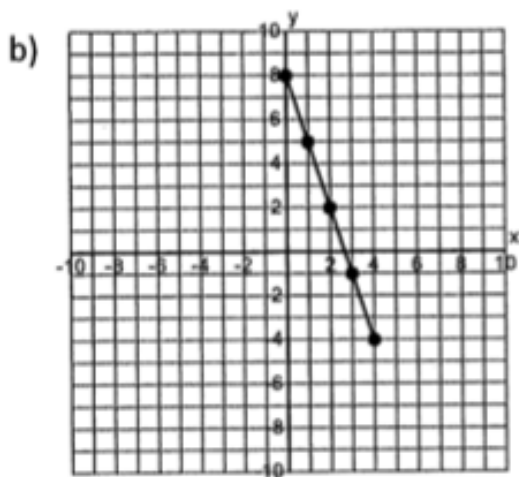
b) $\{(1, 1) (2, 2) (3, 4) (4, 7) (5, 11)\}$

Date _____

Name _____

4) What is the rate of change for each linear relation below?

a) $\{(2, 10) (4, 20) (6, 30)\}$

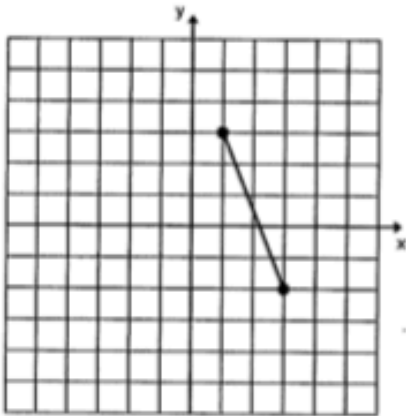


5) If the function is $f(x) = 2x + 4$, find $f(3)$.

From Chapter 6

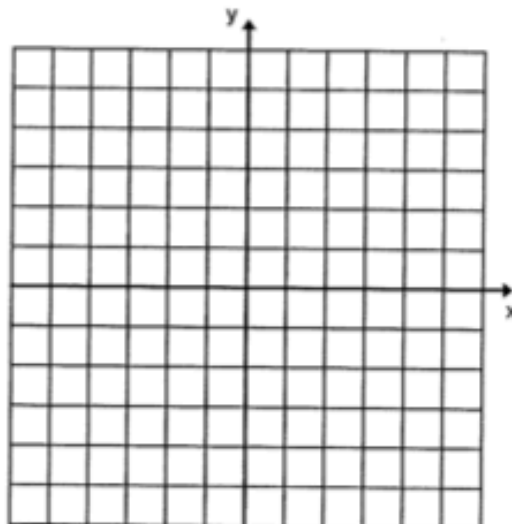
- 1) What is the slope of the line $y = 2x + 3$?

- 2) What is the slope of the following graph?



- 3) What is the slope of the line that passes through the points (3, 6) and (-1, 4)?

- 4) Graph the line $2x + y = -3$.



Date _____

Name _____

- 5) Identify the slope and the coordinates of a point on the line of the equation $y + 5 = -2(x - 4)$.
- 6) Write an equation in the form $y - y_1 = m(x - x_1)$ (slope/point form) for the graph of a linear function that passes through the points (1, 4) and (3, 7).
- 7) Write the equation of the line in the form $y = mx + b$ (slope/intercept form) that has a y-intercept of 5 and is perpendicular to the line with an equation $y = 2x + 3$.
- 8) Rewrite the equation $3x + 2y - 6 = 0$ into the form $y = mx + b$ (slope/intercept form).

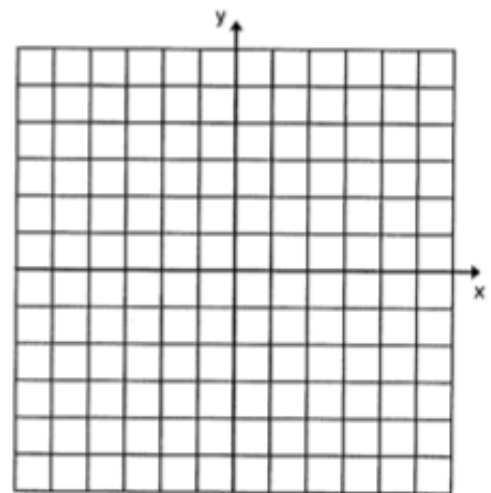
From Chapter 7

1) Is the point (2,3) a solution to the system below? (Why or why not?)

$$3x - 2y = 0$$
$$x = y - 1$$

2) Solve the following system using the **Graphic Method**.

$$y = 2x + 2$$
$$x + y = 5$$



Solution is _____

3) Solve the following system using the **Substitution Method**.

$$2x + 3y = 11$$
$$y = 2x + 1$$

Solution is _____

Date _____

Name _____

4) Solve the following system using the **Elimination Method**.

$$3x + 2y = 1$$

$$x - 3y = -7$$

5) How many solutions (none, infinite, one) does the system have?

a) $y = 2x + 3$

$$y = 2x - 3$$

b) $-2x + y = 4$

$$4x - 2y = -8$$

6) Word Problem: Write the linear system that would help you solve the problem. (Be sure to identify your variables with LET statements.) You do not need to solve the problem.

a) The perimeter of a rectangle is 150 cm. If the length is twice the width, find the length and width of the rectangle.

b) The cost of 2 adult tickets and 3 child tickets is \$35.00. The cost of 4 adult tickets and 1 child ticket is \$45.00. What is the price for the adult and the child tickets?

Date _____

Name _____

ANSWERS:Chapt. 2

1a) $\sqrt{244} \approx 15.62$

b) $\sqrt{96} \approx 9.8$

2a) $x = 11.47$

b) $x = 5.74$

c) $x = 14.3$

d) $\angle A \approx 37^\circ, \angle B \approx 53^\circ$

LG 5

1. $t_n = 4n + 1$ 2. -154 3. 7, 11, 15, 19, 23 4a) $n = 15$ 4b) $n = 9$

Chapt. 3

1a) $x^2 + 10x + 24$

b) $2x^2 + 7x - 15$

c) $x^3 + 6x^2 + 5x - 12$

2a) $3(x - 2)$

b) $-5(x - 2)$ or $5(-x + 2)$

c) $(x + 10)(x - 10)$

d) $(2x + 7)(2x - 7)$

e) $(x + 6)(x + 2)$

f) $(x - 6)(x + 3)$

g) $(2x + 5)(3x - 1)$

h) $3(x + 3)(x - 3)$

Chapt. 4

1a) $5\sqrt{2}$

b) $10\sqrt{2}$

c) 8

d) $2\sqrt[3]{10}$

e) $4\sqrt[3]{2}$

f) $2\sqrt[4]{5}$

2a) $\sqrt{20}$

b) $\sqrt[3]{192}$

3a) 8

b) 16

c) *cannot square negative radicand*

d) 2

e) $\frac{1}{8}$

f) 8

4a) $4\sqrt[5]{3}$

b) $5.5\sqrt[2]{1}$

5a) $\frac{x}{y^2}$

b) x^2y^2

c) x^6

Chapt. 5

1a) Domain: $\{0, 1, 2\}$; Range: $\{3, 4, 5\}$

b) $D: -3 \leq x \leq 4; R: 0 \leq y \leq 2$

2) No, doesn't pass vertical line test

3a) yes

b) no

4a) $\frac{\text{rise}}{\text{run}} = \frac{20-10}{4-2} = 5$

b) -3

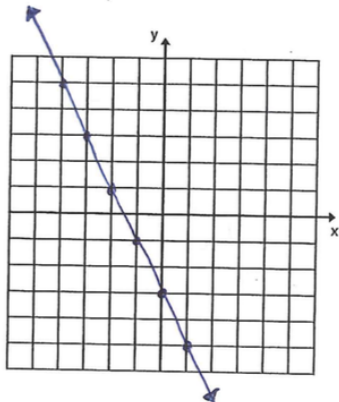
5) 10

Date _____

Name _____

Chapt. 6

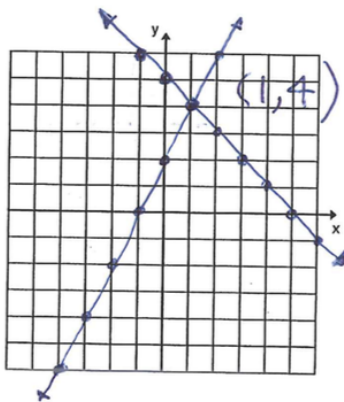
- 1) 2 2) $-\frac{5}{5}$ 3) $\frac{1}{2}$
 4)



- 5) $m = -2$; $(4, -5)$ 6) $y - 4 = \frac{3}{2}(x - 1)$ or $y - 7 = \frac{3}{2}(x - 3)$
 7) $y = -\frac{1}{2}x + 5$ 8) $y = -\frac{3}{2}x + 3$

Chapt. 7

- 1) Yes, $(2, 3)$ is satisfied in both equations
 2) $(1, 4)$



- 3) $(1, 3)$
 4) $(-1, 2)$
 5a) none
 6a) Let $w =$ width
 $l =$ length
 $l = 2w$
 $2l = 2w = 150$
 b) infinite
 b) Let $x =$ price of 1 adult ticket
 $y =$ price of 1 child ticket
 $2x + 3y = 35$
 $4x + y = 45$